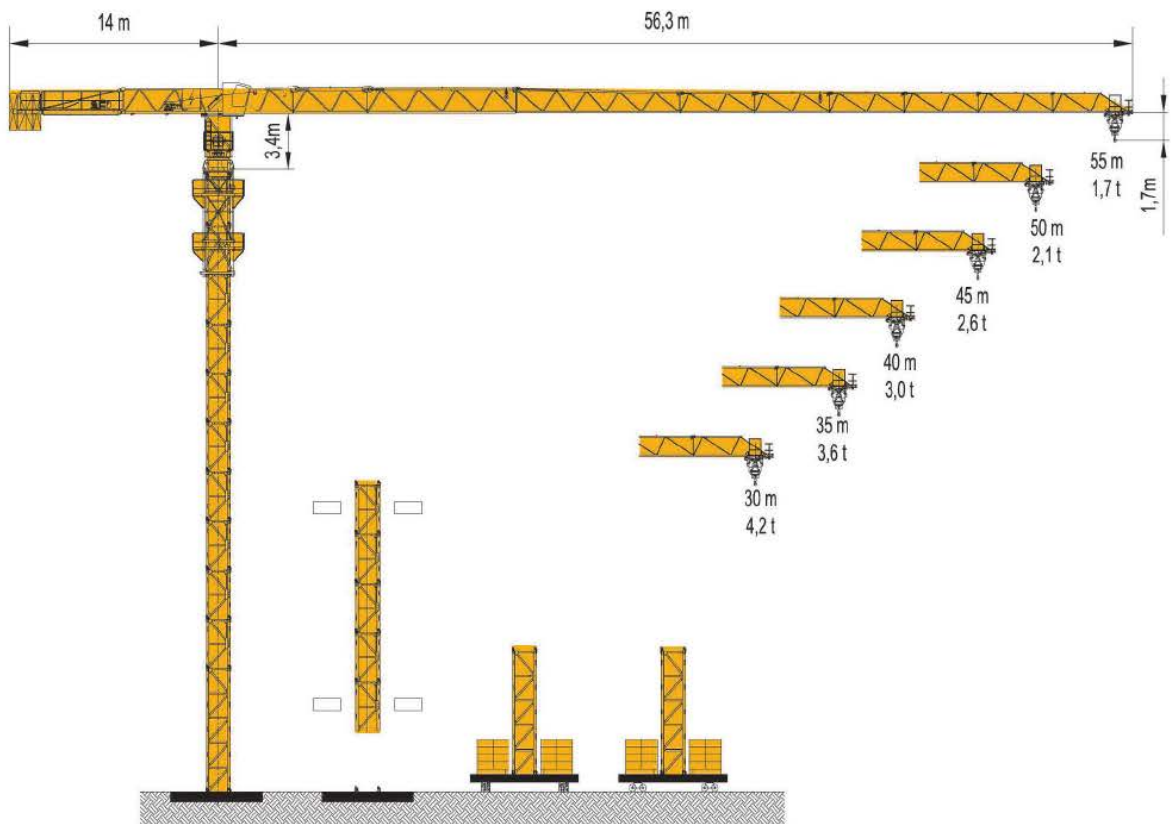




TOWER CRANE

平头式塔式起重机 Topless Tower Crane GHP5517-8

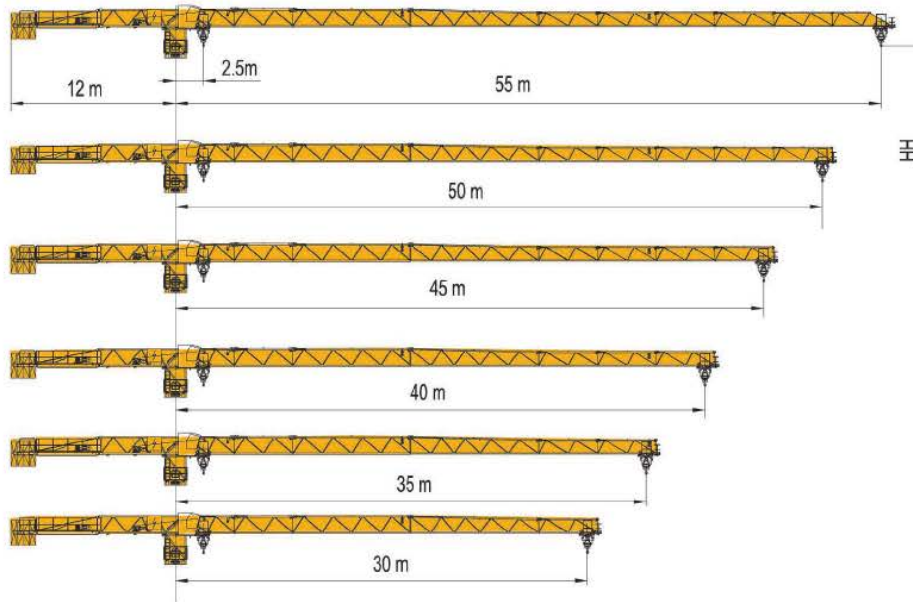




TOWER CRANE

平头式塔式起重机 Topless Tower Crane GHP5517-8

起重臂 Jib



载荷特性 Load Diagrams

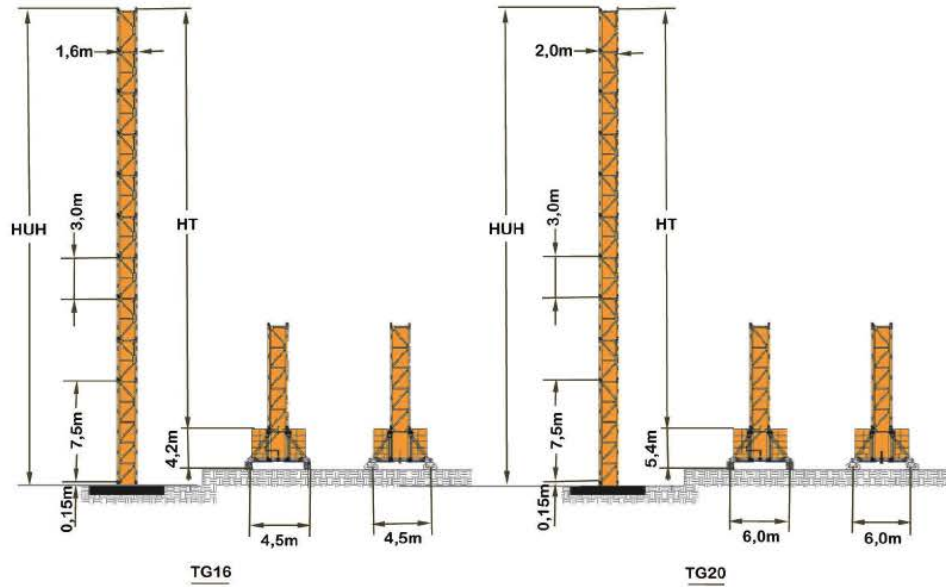
	2,5	14,4	15	18	20	23	25	26,4	26,8	30	35	40	45	50	55	m
55m		4,00	4,00	4,00	4,00	4,00	4,00	4,00	4,00	3,52	2,94	2,51	2,18	1,92	1,70	t
		8,00	7,66	6,23	5,53	4,71	4,27	4,00	4,00	3,52	2,94	2,51	2,18	1,92	1,70	t
50m		4,00	4,00	4,00	4,00	4,00	4,00	4,00	3,83	3,21	2,74	2,39	2,10			t
		8,00	6,75	5,99	5,11	4,64	4,00	4,00	3,83	3,21	2,74	2,39	2,10			t
45m		4,00	4,00	4,00	4,00	4,00	4,00	4,00	4,00	3,48	2,99	2,60				t
		8,00	7,29	6,47	5,53	5,02	4,07	4,00	4,00	3,48	2,99	2,60				t
40m		4,00	4,00	4,00	4,00	4,00	4,00	4,00	4,00	3,50	3,00					t
		8,00	7,31	6,49	5,54	5,04	4,08	4,00	4,00	3,50	3,00					t
35m		4,00	4,00	4,00	4,00	4,00	4,00	4,00	4,00	3,60						t
		8,00	7,50	6,66	5,69	5,17	4,19	4,00	4,00	3,60						t
30m		4,00	4,00	4,00	4,00	4,00	4,00									t
		8,00	7,51	6,67	5,70	5,18	4,20									t



TOWER CRANE

平头式塔式起重机 Topless Tower Crane GHP5517-8

塔身 Tower



固定式 Stationary type		臂架长度 Boom					
塔身Mast TG16	HT (m)	30	35	40	45	50	55
1	7,6	●	●	●	●	●	●
2	10,6	●	●	●	●	●	●
3	13,6	●	●	●	●	●	●
4	16,6	●	●	●	●	●	●
...	...	●	●	●	●	●	●
10	34,6	●	●	●	●	●	●
11	37,6	●	●	●	●	●	●
12	40,6	●	●	●	●	●	●
13	43,6	●	●	●	●	●	●

压重式或行走式 Travelling type		臂架长度 Boom					
塔身Mast TG16	HT (m)	30	35	40	45	50	55
1	11,7	●	●	●	●	●	●
2	14,7	●	●	●	●	●	●
3	17,7	●	●	●	●	●	●
4	20,7	●	●	●	●	●	●
...	...	●	●	●	●	●	●
10	38,7	●	●	●	●	●	●
11	41,7	●	●	●	●	●	●

固定式 Stationary type		臂架长度 Boom					
塔身Mast TG20	HT (m)	30	35	40	45	50	55
1	7,6	●	●	●	●	●	●
2	10,6	●	●	●	●	●	●
3	13,6	●	●	●	●	●	●
4	16,6	●	●	●	●	●	●
...	...	●	●	●	●	●	●
15	49,6	●	●	●	●	●	●
16	52,6	●	●	●	●	●	●
17	55,6	●	●	●	●	●	●
18	58,6	●	●	●	●	●	●

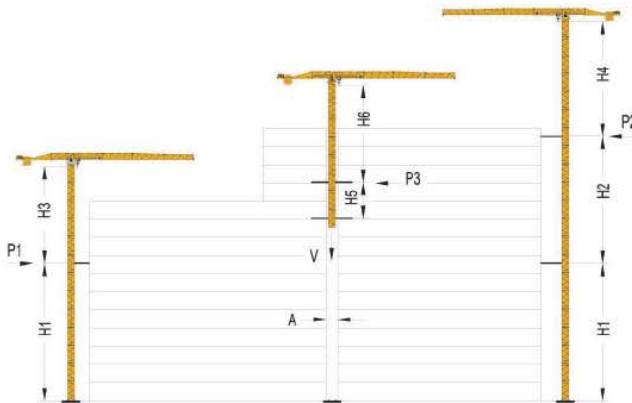
压重式或行走式 Travelling type		臂架长度 Boom					
塔身Mast TG20	HT (m)	30	35	40	45	50	55
1	12,9	●	●	●	●	●	●
2	15,9	●	●	●	●	●	●
3	18,9	●	●	●	●	●	●
4	21,9	●	●	●	●	●	●
...	...	●	●	●	●	●	●
15	54,9	●	●	●	●	●	●
16	57,9	●	●	●	●	●	●



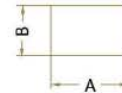
TOWER CRANE

平头式塔式起重机 Topless Tower Crane GHP5517-8

附着 Anchorages



塔身 Mast	TG16		TG20	
	Working	Off Working	Working	Off Working
H1	33,0	—	48,0	—
H2	24,0	—	38,0	—
H3	35,0	—	48,5	—
H4	35,0	—	48,5	—
H5	16,0	—	18,0	—
H6	35,0	—	36,5	—
P1	9,2	18,8	11,8	27,3
P2	9,8	19,6	11,4	26,3
P3	10,8	17,4	14,4	25,5
V	80,2	52,2	88,7	60,7
A	2,2	—	2,6	—
B	1,80	—	2,2	—



机构性能 Mechanisms

机构特性 Mechanisms specification			起升			变幅			回转		行走		电源	
起升 Hoisting	24PQC20	m/min	56,8	28,0	5,0	28,0	14,8	2,5	410m	24/24/4,5	30	可选择 Options! winch		
		t	2,0	4,0	4,0	4,0	8,0	8,0						
变幅 Trolleying	30LVF20	m/min	80,0	40,0	40,0	20,0			450m					
		t	2,0	4,0	4,0	8,0								
变幅 Trolleying	95JXL2	m/min	0-58						95Nm					
回转 Slewing	RCV95 (JH08)	r/min	0,64						95Nm x 2					
行走 Travelling	RT443 (L68B2)	m/min	12,1 / 24,1						3,4/1,7 x 4					
	RT324 (L46A1)	m/min	12,7 / 25,4						2,6/5,2 x 2					
电源 Power Supply			380V 50Hz / 440V 60Hz											
KVA 供电容量 Necessary Electric Power			43kVA / 50kVA											

CONTECH Trading Co.,Ltd.

555/51 Moo 10 Poochaosamingprai Road, Sumrongtai,

Phrapradaeng, Samutprakarn 10130 Thailand

Tel : +66 (0)2 7579997, +66 (0)2 394 3995

Fax : +66 (0)2 757 7977