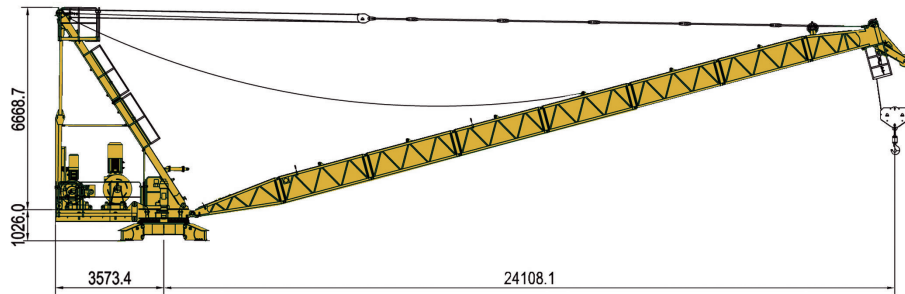


屋面吊 Derrick Crane

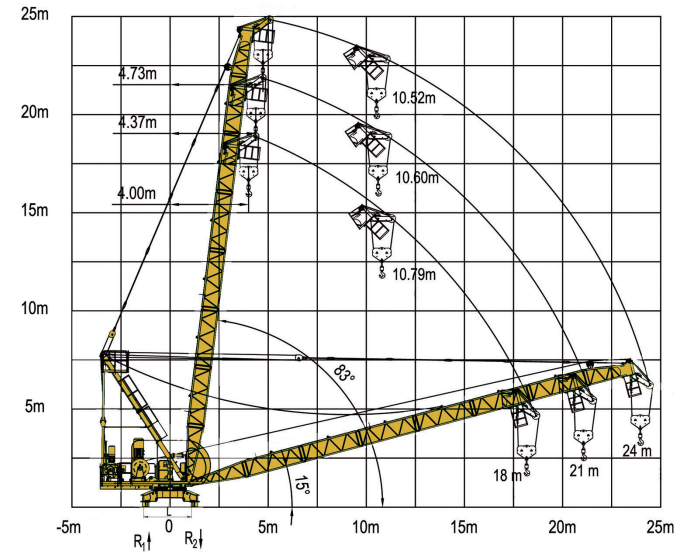
DCB24-10



载荷特性 Load Diagram

Jib Length (m)	Lift Capacity (t)	Lift Capacity (t)							L (m)
		8,0	9,0	10,0	12,0	15,0	18,0	21,0	
24m	6,70	6,70	6,70	6,70	6,26	4,80	3,77	3,08	24,0
	10,00	10,00	10,00	8,43	6,19	4,73	3,69	3,00	24,0
21m	6,70	6,70	6,70	6,70	6,40	4,94	3,98	3,98	21,0
	10,00	10,00	10,00	8,57	6,32	4,87	3,91	3,91	21,0
18m	6,70	6,70	6,70	6,70	6,53	5,14	5,14	5,14	18,0
	10,00	10,00	10,00	8,68	6,46	5,06	5,06	5,06	18,0

起重臂 Jib



地脚反力 Corner Forces

L (mm)	R1 (kN)	R2 (kN)	自重 (t) Dead Weight	配重 (t) Counter Weight
2500	336	478	16800	无 Without

箱单 Packing List

Part	Piece	Description		L (m)	B (m)	H (m)	W(kg*)
UPPORT PART	1	Jib section 01		3.15	1.15	0.90	335
	6	Jib section 02		3.11	0.90	1.00	230
	1	Jib section 03		3.26	0.88	2.23	720
	1	Tower head		7.75	1.29	0.58	1220
	1	Tower head cradle(lower)		3.19	1.09	0.44	265
	2	Tower head cradle(upper)		3.09	0.24	0.32	105
	2	Link		2.12	0.09	0.07	16
	10	Tie bars(long) - Jib (bundle)		3.12	0.13	0.10	29
	2	Tie bars(short) - Jib (bundle)		1.52	0.13	0.10	18
	1	Counter jib		2.70	1.20	0.68	990
	2	Damp		0.65	0.20	0.20	40
	1	Luffing pulley block		0.46	0.48	0.31	120
	1	Hoist unit + rope		1.88	1.03	2.21	2910
	1	Luffing unit + rope		1.28	1.13	1.82	1050
	1	Turntable + slewing unit		2.1	2.1	2.0	3460
	1	Hook Block		0.95	0.26	1.57	310
	1	Dismantling device		1.20	0.98	0.48	120
	4	Leg for turn table		0.88	0.52	0.57	270
1	Cabin		4.10	1.30	2.35	1650	
4	Angle		0.51	0.51	0.31	65	

机构性能 Mechanisms

机构特性 Mechanisms specification							kW				
起升 Hoisting		45LVF30	m/min	60	45	30	40	30	20	500m	45
			t	3,3	4,5	6,7	5,0	7,5	10,0		
拉臂 Luffing		15FVF20	min	15°~80° t=1,8					170m	15	
回转 Slewing		5,5RVF	r/min	0,70						5,5	
电源 Power Supply							380V 50Hz / 440V 60Hz				
KVA 供电容量 Necessary Electric Power							80kVA				

* 数据可能有所调整，以产品说明书为准。

* Relative parameter might be adjusted. Final parameter is subject to its instruction manual.