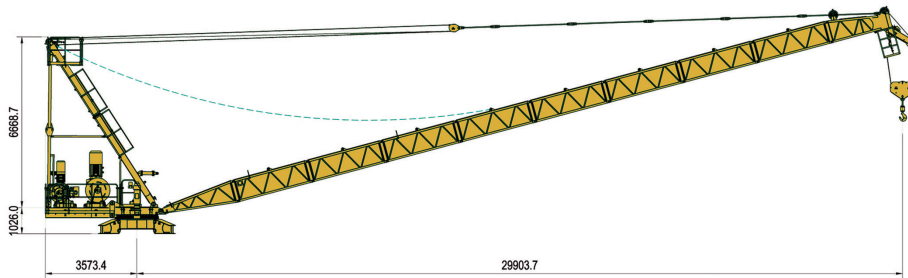


## 屋面吊 Derrick Crane

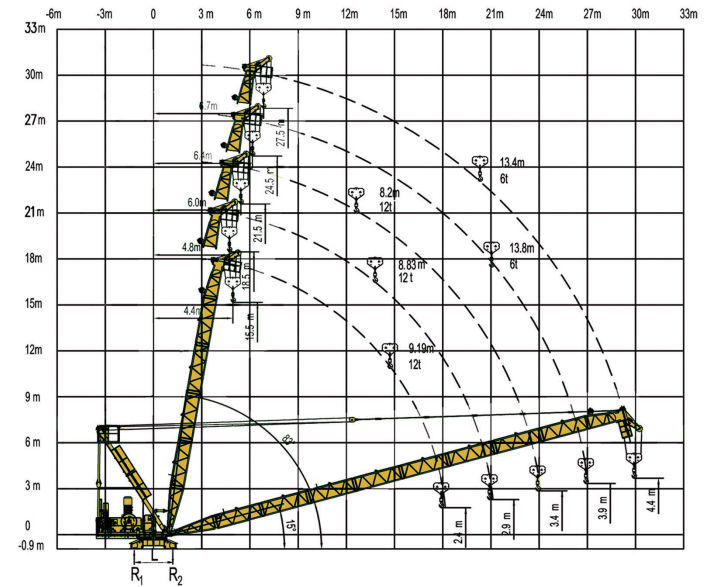
### DCB30-12



载荷特性 Load Diagram

Length (m)	6.7	8	9	10	12	15	18	21	24	27	30	Unit
30m	6,00	6,00	6,00	6,00	5,19	3,95	2,94	2,21	1,70	1,35		t
27m	6,00	6,00	6,00	6,00	5,73	4,40	3,31	2,65	2,15			t
24m	6,00	6,00	6,00	6,00	6,00	4,74	3,70	3,00				t
21m	6,00	6,00	6,00	6,00	6,00	4,81	3,85					t
18m	6,00	6,00	6,00	6,00	6,00	5,05						t

起重臂 Jib



地脚反力 Corner Forces

L (mm)	R1 (kN)	R2 (kN)	自重 (t) Dead Weight	配重 (t) Counter Weight
2500	348	486	17800	无 Without

### 箱单 Packing List

Part	Piece	Description		L (m)	B (m)	H (m)	W(kg*)
UPPORT PART	1	Jib section 01		3.15	1.15	0.90	335
	8	Jib section 02		3.11	0.90	1.00	230
	1	Jib section 03		3.26	0.88	2.23	720
	1	Tower head		7.75	1.29	0.58	1220
	1	Tower head cradle(lower)		3.19	1.09	0.44	265
	2	Tower head cradle(upper)		3.09	0.24	0.32	105
	2	Link		2.12	0.09	0.07	16
	10	Tie bars(long) - Jib ( bundle )		3.12	0.13	0.10	29
	2	Tie bars(short) - Jib ( bundle )		1.52	0.13	0.10	18
	1	Counter jib		2.70	1.20	0.68	990
	2	Damp		0.65	0.20	0.20	40
	1	Luffing pulley block		0.46	0.48	0.31	120
	1	Hoist unit + rope		1.88	1.03	2.21	2910
	1	Luffing unit + rope		1.28	1.13	1.82	1050
	1	Turntable + slewing unit		2.1	2.1	2.0	3460
	1	Hook Block		0.95	0.26	1.57	310
	1	Dismantling device		1.20	0.98	0.48	120
	4	Leg for turn table		0.88	0.52	0.57	270
	4	Angle		0.51	0.51	0.31	65

(\*) Weight per piece

### 机构性能 Mechanisms

机构特性 Mechanisms specification										kW	
起升 Hoisting		45LVF	m/min	60	45	30	30	22,5	15	500m	45
			t	3,0	4,5	6,0	6,0	9,0	12,0		
拉臂 Luffing		15DVF	min	15° ~ 83° t=3,0						150m	15
回转 Slewing		5,5SVF	r/min	0,7							5,5
电源 Power Supply			380V 50Hz / 440V 60Hz								
KVA 供电容量 Necessary Electric Power			80 kVA								

\* 数据可能有所调整，以产品说明书为准。

\* Relative parameter might be adjusted. Final parameter is subject to its instruction manual.