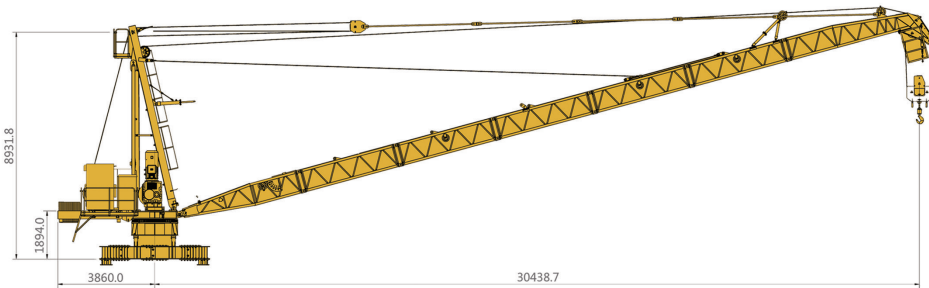


屋面吊 Derrick Crane

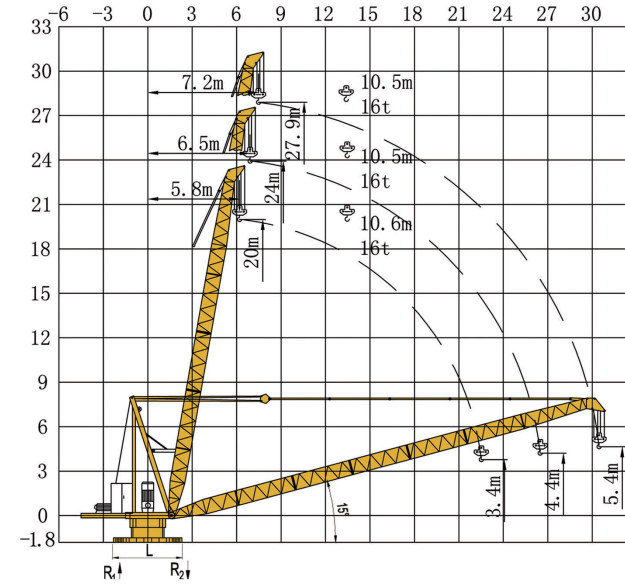
DCB30-16



载荷特性 Load Diagram

	7,2	10,5	12	15	18	20	22	26	30	
30m		8,00	8,00	8,00	7,40	6,30	5,30	3,90	2,90	t
		16,00	13,20	9,50	7,10	6,00	5,00	3,60	2,60	t
26m		8,00	8,00	8,00	7,70	6,60	5,60	4,10		t
		16,00	13,40	9,70	7,40	6,30	5,30	3,80		t
22m		8,00	8,00	8,00	7,90	6,80	5,60			t
		16,00	13,90	10,00	7,60	6,50	5,30			t

起重臂 Jib



地脚反力 Corner Forces

L (mm)	R1 (kN)	R2 (kN)	自重 (t) Dead Weight	配重 (t) Counter Weight
3535	409	633	23,4	6,7
5445	222	454		

箱单 Packing List

Part	Piece	Name		L (m)	B (m)	H (m)	Kg*
	1	Jib section 01		5.16	1.26	0.96	832
	5	Jib section 02		4.12	1.12	1.04	445
	1	Jib end		5.89	1.12	1.76	923
	1	Counter jib		2.88	2.34	0.54	1126
	1	Hoist unit + rope		2.21	0.94	2.38	3248
	1	Luffing unit + rope		1.82	1.89	1.02	2904
	1	Tower head		7.44	1.26	0.8	1503
	2	Cradle		5.93	0.24	0.35	321
	1	Turntable + slewing unit		2.22	2.17	1.89	4141
	2	Jib tie bar 01		4.66	0.13	0.08	73
	8	Jib tie bar 02		4.16	0.13	0.08	64
	1	Damp bar		1.65	1.22	0.22	150
	2	Damp tie bar		1.12	0.05	0.08	3.16
	1	Pulley block		0.62	0.6	0.48	297
	1	Hook		1	0.5	1.9	600

Part	Piece	Name		L (m)	B (m)	H (m)	Kg*
	1	Self dismantling device		1.81	1.28	1.18	199
	1	Electric control box 01		1.3	0.475	1.8	400
	1	Electric control box 02		0.65	0.425	1.45	120
	1	Resistance box		0.82	0.62	1.72	200
	2	Self dismantling beam		1.28	0.32	0.35	64
	1	Cross beam		4.4	4.4	1	3582
	2	Bar for dismantling		0.7	0.08	0.08	4
	1	Cabin		1.5	1	1.9	500

(*Weight per piece

机构性能 Mechanisms

机构特性 Mechanisms specification												kW
起升 Hoisting		55LVF	m/min	42	32	21	21	16	10,5	700m	55	
			t	3,5	5,0	8,0	7,0	10,0	16,0			
拉臂 Luffing		30DVF	min	15°~80° t=3,0						200m	30	
回转 Slewing		5,5SVF	r/min	0,46							5,5	
电源 Power Supply				380V 50Hz / 440V 60Hz								
KVA 供电容量 Necessary Electric Power				100 kVA								

* 数据可能有所调整，以产品说明书为准。

* Relative parameter might be adjusted. Final parameter is subject to its instruction manual.